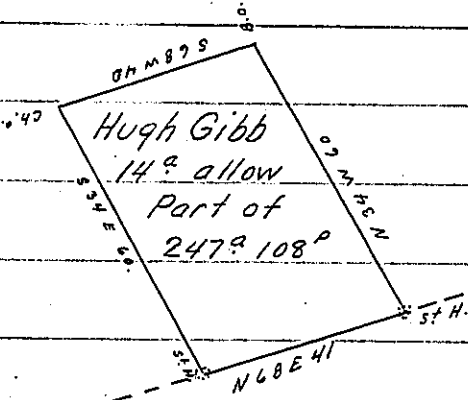


The Draft of a tract of Land  
 Situate in Mifflin Township  
 Cumberland county Containing  
 Fourteen Acres & allow. Being  
 part of a tract of 247<sup>a</sup> 108<sup>p</sup> &c.  
 Surveyed on an application



Granted to Hugh Gibb dated the 10<sup>th</sup> Nov<sup>r</sup> 1766. N<sup>o</sup> 1864. Surveyed  
 & dividid the 29<sup>th</sup> day of March 1821.

Robt Clark D.S.

To Jacob Spangler Esq. }  
 Surveyor General }

IN TESTIMONY that the above is a copy of the original remaining on file in  
 the Department of Internal Affairs of Pennsylvania, made  
 conformably to an Act of Assembly approved the 16th day of  
 February, 1833, I have hereunto set my Hand and caused  
 the Seal of said Department to be affixed at Harrisburg,  
 this thirtieth day of March 1905.

*James D. Brown*  
 Secretary of Internal Affairs.